



E-bost: AddysgArchifau@gwynedd.llyw.cymru

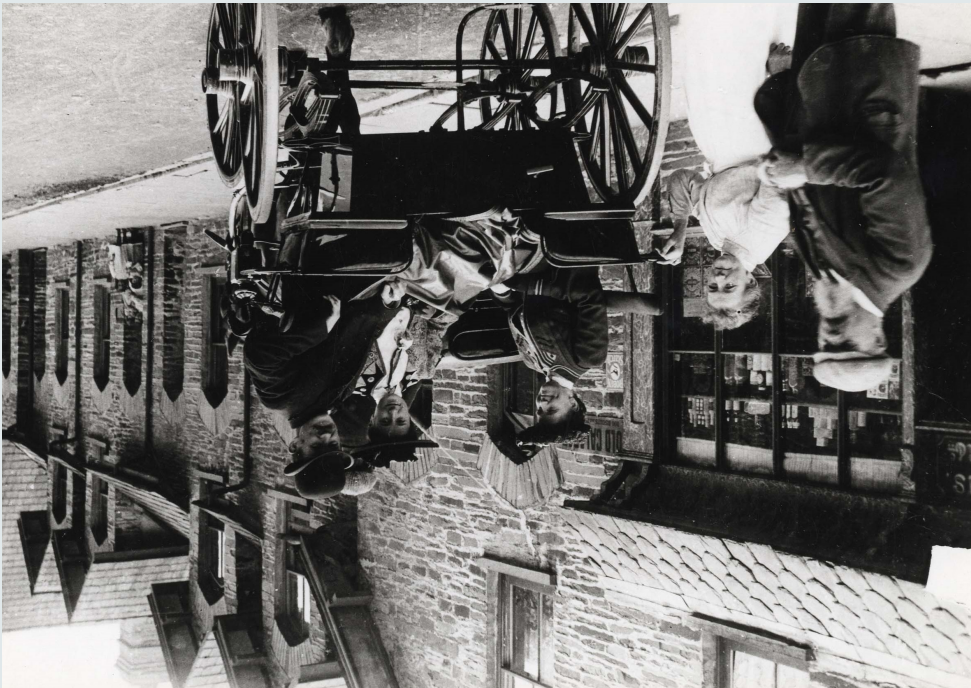
Ffôn: 01286 679091

Gwyn Llewelyn Ellis (Mercher, Iau a Gwener)

Caryl Aubrey Griffith (Llun, Mawrth a Mercher)

Swyddog Addysg Archifau ac Amgueddfeydd:

MANYLION CYSWLLT



**GWASANAETH ADDYSG ARCHIFAU
AC AMGUEDDFEYDD CYNGOR
GWYNEDD**

GWYNEDD COUNCIL ARCHIVES AND MUSEUMS' EDUCATION SERVICE



CONTACT DETAILS

Archives and Museums Education Officer:

Caryl Aubrey Griffiths (Monday, Tuesday and Wednesday)

Gwyn Llewelyn Ellis (Wednesday, Thursday and Friday)

Tel: 01286 679091

E-mail: AddysgArchifau@gwynedd.llyw.cymru



DARPARU COPÏAU AC YMWEID ÂR YSGOL

I hwyliuso dysgu'r sgîl o ymholi Hanesyddol trwy ddefnyddio a dehongli tystiolaeth, gellir darparu copïau o ddeunydd o gasgliad archifdai Caernarfon a Dolgellau, yn hen luniau, mapiau, papurau newydd a dogfennau eraill o bob math, i ateb gofynion ysgol unigol.



Yn ogystal, gall y Swyddog Addysg ymweld ag ysgol gan ddysgu'r dosbarth gyda chymorth cyflwyniad PowerPoint sy'n cynnwys delweddau amrywiol o gasgliad yr archifdai. Fel arfer bydd casgliad o arteffactau o'r casgliad amgueddfaol hefyd, sy'n cyflwynu cyfnod neu thema benodol.

YMWEID AG ARCHIFYD GWYNEDD YNG NGHAERNARFON NEU DDOLGELLAU

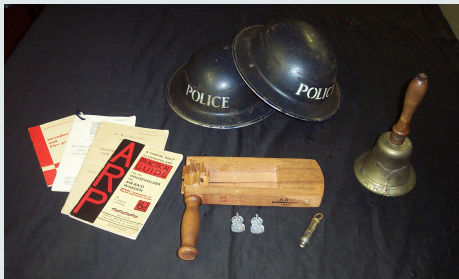
Gellir trefnu i ddosbarth ymweld a chael cyflwyniad gan y Swyddog Addysg ar thema benodol a chyflie i weld archifau gwreiddiol sy'n ymdrin â gwahanol ardaloedd yng Ngwynedd. Ceir taith dywys o gwmpas yr adeilad a gweld 'tu ôl i'r llenwi! lle mae'r dogfennau yn cael eu cadw.

AMGUDDFA LLOYD GEORGE A BWTHYN HIGHGATE, LLANYSTUMDWY

Yn Amgueddfa Lloyd George a bwthyn Highgate, yn ogystal â dysgu am hanes y gwladweinydd enwog, mae modd defnyddio'r adnoddau yno i ddysgu am agweddau ar "fywydau bob dydd pobl . . . yn y bedwaredd ganrif ar bymtheg", yn y cartref ac yn yr ysgol.

STORIEL, BANGOR

Yn amgueddfa Storiell, Bangor gellir dysgu am fywyd yng Ngwynedd drwy'r oesoedd. Mae cyflie i fwynhau arddangosfeydd ar hanes lleol, archaeoleg, dodrefn, gwisgoedd, tegnanau a llawer mwy. Mae'r uchafbwyntiau yn cynnwys model o Bont y Borth Thomas Telford, y 'Welsh Not', Coron Brenin Enlli a chleddyf Rhufeinig o Segontium.



PROVIDING COPIES AND SCHOOLS VISITS

To aid the teaching of the skill of Historical Enquiry by using and interpreting evidence, copies can be provided of archives in the record offices' collections at Caernarfon and Dolgellau, such as old photographs, maps, newspapers and documents of all kinds, in order to meet the requirements of individual schools.

The Education Officer can also visit schools and teach a class with the assistance of a PowerPoint presentation containing digital images of archives from the record offices' collections. Usually there will also be a collection of museum artefacts which depict a specific period or theme.

VISITING THE GWYNEDD RECORD OFFICES AT CAERNARFON OR DOLGELLAU

A class could visit and have a presentation by the Education Officer on a particular theme and an opportunity to consult original archives pertaining to specific localities as well as to have a guided tour of the building to see 'behind the scenes' where the documents are stored.

THE LLOYD GEORGE MUSEUM AND HIGHGATE COTTAGE, LLANYSTUMDWY

At the Lloyd George Museum and Highgate cottage, as well as learning about the renowned statesman, it is possible to use the resources there to learn about aspects of "people's daily lives in the . . . nineteenth century", both at home and at school.

STORIEL, BANGOR

In the museum galleries at Storiell, Bangor pupils can learn about life in Gwynedd through the ages. They can enjoy the displays on local history, archaeology, furniture, clothes, toys and much more. Highlights include a model of Thomas Telford's Menai Bridge, the 'Welsh Not', the Bardsey Crown and a Roman sword from Segontium.